

## LIMITED WARRANTY\* ONE (1) YEAR:

Your *Elite Professional* small kitchen appliance is built with precision, inspected and tested before leaving our factory. It is warranted, to the original purchaser or, to be free from any manufacturing defects under normal use and conditions for one (1) year, cord excluded. During that period, should the appliance fail to operate properly, return the appliance with your sales receipt to the store where purchased. This warranty gives you special legal rights and you may also have other rights to which you are entitled, which may vary from state to state. If you use your appliance for household use and according to instructions, it should give you years of satisfactory service.

**This limited warranty covers appliances purchased and used within the surrounding United States and does NOT cover:**

- Damages caused from improper usage or installation of appliance.
- Damages caused from shipping.
- Defects other than manufacturing defects.
- Breakage caused by misuse, abuse, accident, alteration, lack of proper care and maintenance, or incorrect current or voltage.
- The loss or missing parts of the appliance. Parts will need to be purchase separately.
- Damage from service by other than an authorized dealer or service center.
- Any transportation and shipping charges.

**RETURNS:** Any return of defective merchandise to the manufacturer must be processed accordingly by contacting customer service first to obtain RA # (Return Authorization Number). We will not accept any returns of merchandise without an applicable RA #.

\*One Year Limited Warranty valid only in the United States, **excluding** Alaska, Hawaii, and Puerto Rico.  
For international warranty, please contact the local distributor.

\*\*Any instructions or policy included in this manual may subject to change at any time.

\*Any instructions or policy included in this manual may subject to change at any time.

**Model B701T**

***Elite Professional* 8 Cup Fuzzy Logic Rice Cooker**

**MAXI-MATIC, USA**

18401 E. Arenth Ave. City of Industry, CA 91748

Customer Service Dept: (626) 912-9877 Ext: 120 Mon-Fri 9AM-5PM PST

Website: [www.maxi-matic.com](http://www.maxi-matic.com)

Email: [info@maxi-matic.com](mailto:info@maxi-matic.com)

**Elite**  
EST. 1986

**PROFESSIONAL**

## 8 Cup Fuzzy Logic Rice Cooker



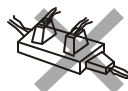
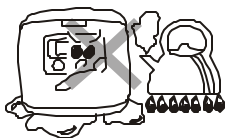
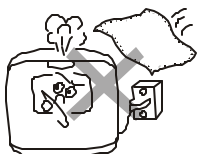
**Model B701T**

# Instruction Manual

# IMPORTANT SAFTY PRECAUTIONS

When using electrical appliances, basic safeguard precautions should always be followed including the following:

1. Read all instructions carefully before using the appliance for the first time.
2. Do not touch hot surfaces. Use handles or knobs
3. To protect against electric shock, do not immerse cord, plugs, and Rice Cooker, except inner lid and inside pan, in water or other liquid, or allow liquid to come into contact with electrical parts.
4. Close supervision is necessary when the appliance is used by or near children.
5. Always unplug the appliance from outlet when not in use and before cleaning. Allow the appliance to cool before putting on or taking off parts.
6. Do not operate any appliance with a damaged cord or plug or after the appliance malfunctions or has been damaged in any manner. In such cases, return the appliance to the nearest service center for examination, repair, or adjustment.
7. The use of attachments not recommended by the appliance manufacturer may cause injuries.
8. This appliance is designed for household use only. Do not use it outdoors or for other than intended use as described in this manual. Do not use it to heat any substance that is strongly acidic or alkaline in nature.
9. Do not let cord touch hot surfaces or hangs over the edge of a counter or table.
10. Do not place the appliance near stoves, flames, inflammable materials, or on wet surfaces.
11. Extreme caution must be used when moving an appliance containing hot water, food, or other hot liquids.
12. Always attach plug to appliance first, then plug cord into the wall outlet. To disconnect, turn any control to "off", then remove plug from wall outlet.
13. Electric wire should not be subjected to twisting, stretching, and knotting. When plugging out from power socket, take hold of the plug main body instead of the wire.
14. This appliance should not share with the other electric appliances one multi-socket power outlet. To reduce the risk of electric shock. This appliance has a polarized plug (one blade is wider than the other is). This plug is intended to fit into a polarized outlet only one way. If the plug does not fit fully into the outlet, reverse the plug. If it still does not fit, contact a qualified electrician. Do not attempt to modify the plug in any way.
15. A short power supply cord is provided to reduce the risk resulting from becoming entangled in or tripping over a longer cord. If longer detachable power supply cords or extension cords are to be used:
  - (a) The marked electrical rating of the set or extension cord should be at least as great as the electrical rating of the appliance.
  - (b) A long cord should be arranged so that it will not drape over the counter top or table top where it can be pulled down by children or tripped over unintentionally.
16. Caution: To reduce the risk of electric shock, please cook only in the removable container.



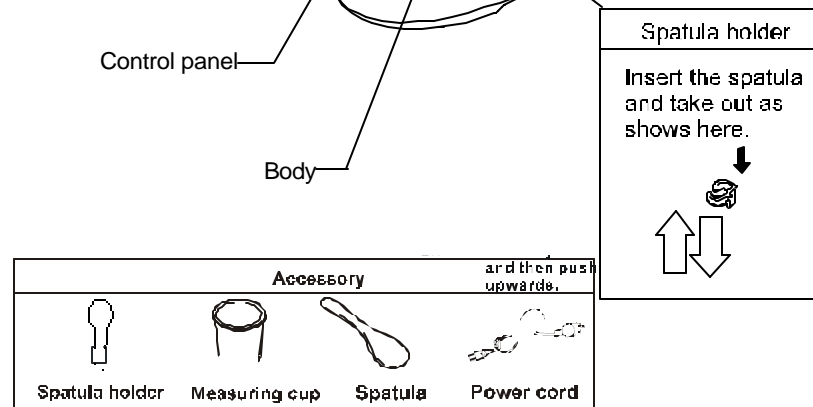
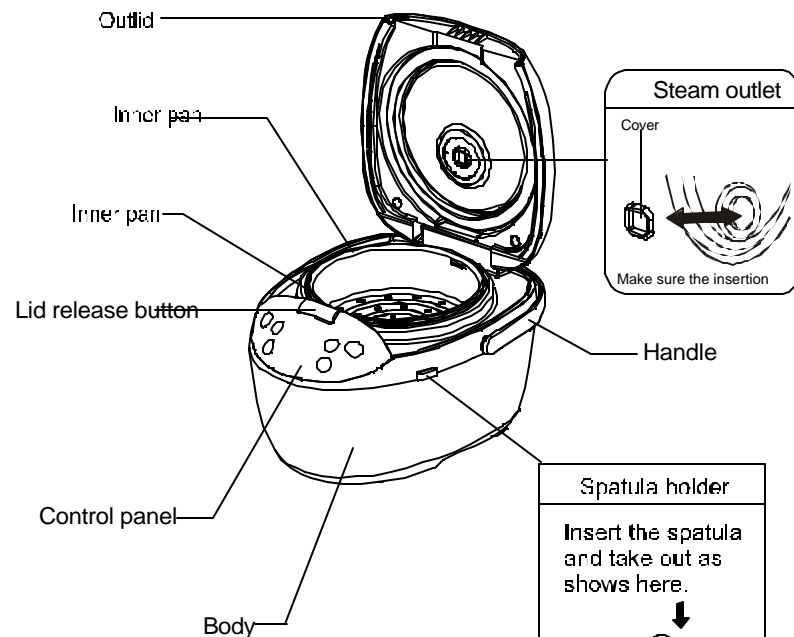
# SAVE THESE INSTRUCTIONS

## READ ALL INSTRUCTIONS FIRST BEFORE OPERATING

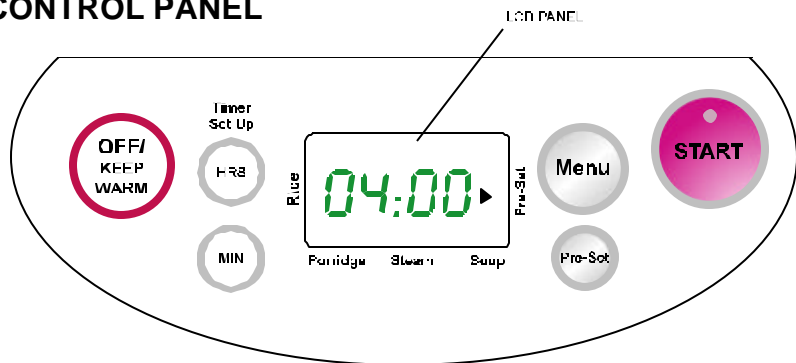
### SPECIFICATIONS:

Model	B601T
Rated Voltage	120V~ 50/60Hz
Rated Power Consumption	500W
Control Mode	Micro-computer
Outer diameter	293mm(W) * 369mm(D) * 236mm(H)
Pot capacity	2.0L
Rice Cooking	0.18~0.6L (Rice only)
Maximum Capacity For Porridge	0.9L (Rice + Water)
Weight	approximatel y 2.5kg
Length of Power Cord	1.8m

### PARTS & ACCESSORIES



## CONTROL PANEL



- **LCD display:** Cooking time count down and current task are displayed or indicated.
- **Menu Select:** Press to select a cooking mode: cook rice, porridge, steaming, soup, or Pre-Set mode.
- **Off /Keep Warm:** Press to cancel setting or switch to Keep Warm Mode.
- **Start:** Press to start cooking.
- **Delay Start:** The cooker can be set to start at a later time.
- **Hour Button:** Press to adjust the time by one-hour increments.
- **Minute :** Press to adjust the time by 15-minute increments.

## WHAT IS FUZZY LOGIC TECHNOLOGY?

Fuzzy Logic is the name given to a micro digital technology that allows certain appliances to have a pre-programmed setting. For instance, your new rice cooker has a pre-programmed timer and temperature settings for cooking Rice, Porridge, Steaming and Soup. Each food item has a pre-programmed setting to meet its individual cooking needs.

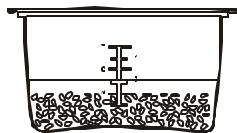
## HOW TO COOK RICE

This model of Rice Cooker embeds advanced fuzzy logic technology, which takes automatic measuring of water temperature during heating, and cooks in a more efficient way

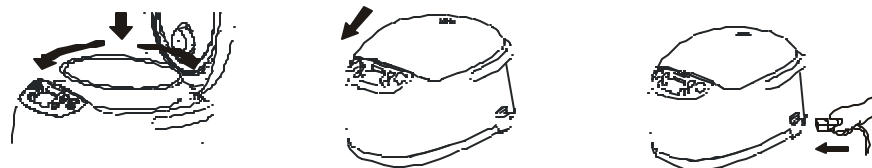
1. Use the Measuring Cup to decide the needed amount of rice you want to cook and Wash the rice in a separate container other than the cooking pot. Note that one cup of rice is approximately 0.18 L or 150g.



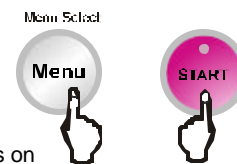
2. Pour the washed rice into cooking pot and add an appropriate amount of water. Use the reference scale to decide the amount of water needed. Apart from considerations of the types of rice and personal tastes, 4 cups of rice to be cooked, for example, will need enough water to fill the pot up to the 4<sup>th</sup> notch on the scale. Fill enough water that it is on scale above four, which is five.



3. Place the pot inside the main body of the cooker, revolving the pot slightly to place it snugly onto the heating plate; and see that the rice is not clustered in one side. Before placing the pot inside, be sure that there is no dripping water or any dirt clinging to the outer surface of the pot, as well as be sure that the surface of the heating plate is free from dirt.



4. Cap the steam outlet and snap close the lid.
5. Plug in the cooker first and then plug into a power outlet.
6. Set a cooking program and press start. For general purposes rice cooking, just press the **START** button. The time starts counting down on the display. Default Rice cooking time is 00:55 minutes.
7. To cook **porridge**, press **Menu Select** till the **triangular indicator** ? is on porridge, then press **START** button. The default porridge cooking time is 2 hours. Default cooking time for porridge is 02:00 hours. You can adjust cooking time by pressing the Hour and Minute keys. It depends on personal tastes to cook it thick or thin by adding more or less water and adjust cooking time.
8. To cook in steaming mode, press **Menu Select** till the **triangular indicator** ? is on **Steaming**, then press **START** button. Default steaming time is 00:30 minutes. You can adjust the default cooking time by pressing the Hour and Minute keys
9. To cook soup, press **Menu Select** till **triangular indicator** ? is on soup, then press **START** button. Default cooking time for soup is 02:00 hours. You can adjust the default cooking time by pressing the Hour and Minute keys.



### For example, to cook 3 cups of rice

The control panel operation is as follows

1. Use the **Menu Select Key** to choose **RICE** cooking.
2. Press the **Start Key**
3. The display shows the cooking time 00:55 being counted down until the Keep Warm indicator lights up.
4. Once entering Keep Warm mode, the display shows steam time added up. You can serve the rice now or use the spatula to loose the rice layers and eat it later. The recommended time in keep warm mode after the rice has been cooked is 15 minutes.

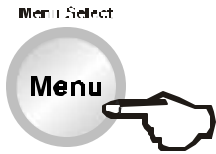


Light Up



## To Cook Rice in PRE-SET Cooking Mode

### STEP 1



PRE-SET mode enables you to place rice and water in the cooker and program it to start cooking at a later time. However, when using this feature, make sure that you have taken some preliminary steps, and that both rice and water are ready in the pot of the cooker before it automatically starts cooking.

**For example, if you want to start cooking rice 4 hours later,**

1. Press **Menu Select** button to select rice cooking.
2. Press **Delay Start button** with the triangular indicator switch to Delay Start.
3. Press the **Hour** and **Minute** buttons to set time.
4. Press **Start** button. The time you just set will be counted down.

Note: if ever power is switched off during cooking as in the case of a power blackout, the cooker needs to be reprogrammed to perform its cooking functions.

### STEP 2



### STEP 3



## Keep Warm

As soon as the keep warm light is on, the system enters into keep warm mode.

Before rice is kept in this state, use a spatula to soften the rice layers and close the lid tight so as to prevent the rice from getting dried up or lumpy.

The keep warm mode shall not last for more than twelve hours. Do not keep easily perishables such as overnight leftovers of rice and other dishes in this state for too long.

Porridge is generally not kept in this state for it is likely to turn into a kind of rice paste. To stop the keep warm mode, switch off power.

## Cleaning and Care

Before starting to clean the appliance, be sure to plug out of power source and that the cooker has already cooled down from use.

Outer surfaces of the cooker

Use dried cloth to wipe clean the cooker's outer surface.

The inner surface of the cooker's lid

Use damp cloth to wipe off any vestiges of rice or soup

### Steam valve

Take off the steam valve and spray wash it. After cleaning the valve, be sure to insert the valve so that it fits very well into the outlet.

### Edges surrounding the cooking pot

Drops of water may be seen here as a result of the condensation of hot steams from the cooking pot. Wipe these drops of water away with a cloth.

### Heating plate

Please use cloth or sand paper 320# to wipe away any dirt or grain of rice found clinging to these places.

Otherwise could cost rice to be done short of satisfactorily.

### Cooking pot and spatula

Wash these with sponge or neutral kitchenware detergents.

The steam outlet let out hot steam when the cooker is working. Do not touch or put your hands or face near the steam outlet when the cooker is in use.

Do not cover the steam outlet with cloth or other material when the cooker is in use, which is not necessary and could damage the lid of the rice cooker.

To protect the integrity of the fluorinate resin interior layer, use only the included spatula to scoop rice, as well as use only soft material such as sponge to clean the interior of the removable inner pot.

